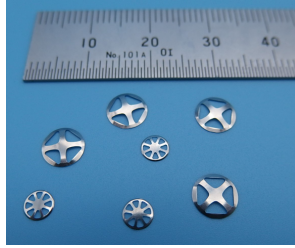


METAL DOME

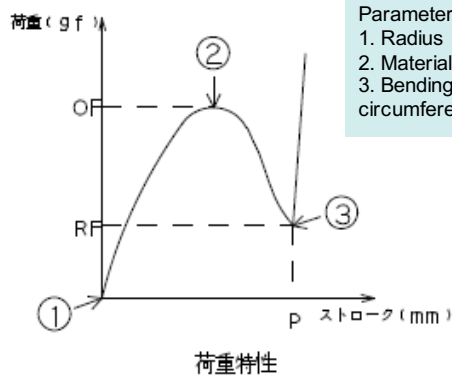
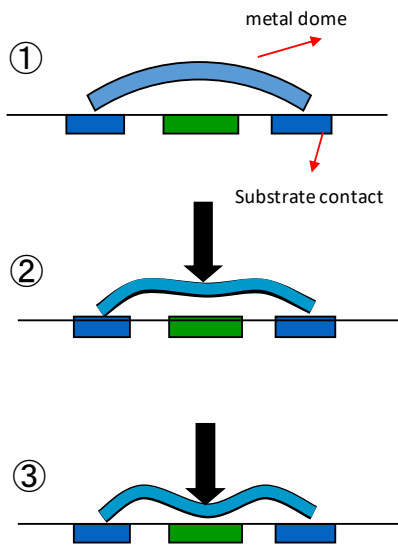
1. Features

- Has both an electrical contact function and a tactile function.
- Can quantify and manage feel. *Load characteristics
- Uses metal material (foil), and is resistant to repetitive movements.

- Metal material
 - Stainless steel (SUS301)
 - Thickness: 0.025 mm – 0.07 mm
- Surface treatment
 - Nickel plating
 - Silver plating
- Product size
 - Minimum: Φ1.6mm × 1.1mm
 - Maximum: Φ8.8mm



2. Definition of load characteristics



Parameters
 1. Radius of curvature of the dome
 2. Material thickness / hardness
 3. Bending angle of outer circumference

Operation feel is expressed by click rate (CK rate).

- OF: Operating load (2)
- RF: Return load (3)
- P: Stroke
- K: Click rate

CK is calculated with the following formula.

Operation feel is expressed by click rate (CK rate).

$$CK = \frac{OF - RF}{OF} \times 100$$

3. Applications

- Smartphones
- Game consoles
- PC keyboards
- OA equipment, remote control
- Etc.

